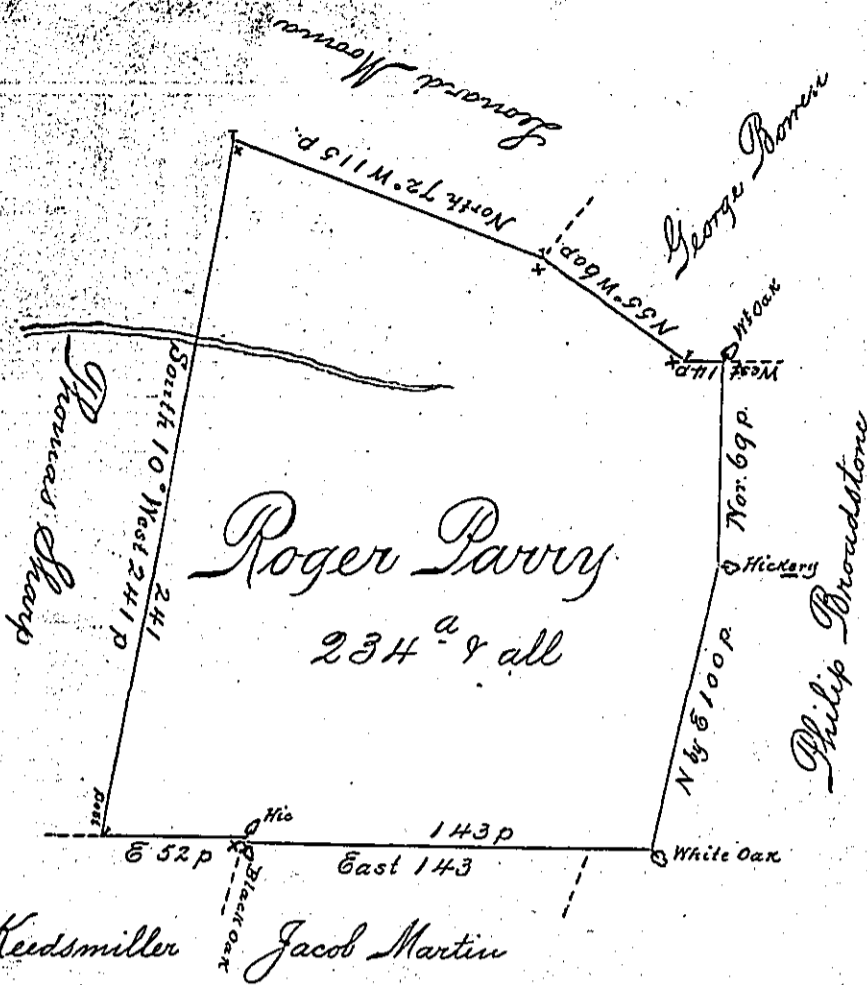


C-144-79

a-50 92



C-39-236

C-224-101

By Virtue of a Warrant from the Proprietor Dated the third Day of November 1736 the above Described tract of Land was Surveyed unto Roger Parry (Barry) in Erie Township in the County of Lancaster Beginning at a post in Jacob Keedsmillers Line Thence on the same East 52 perches to a Hickery Thence South 20 Degrees East by <sup>s<sup>c</sup> Keedsmiller</sup> ~~Jacob Martin~~ 2 perches to a Black Oak Thence East 143 perches &c Containing Two Hundred and Thirty four Acres beside the allowance of Six p Cent of 6<sup>th</sup> June 1738 p Saw Lightfoot

IN TESTIMONY that the above is a copy of the original remaining on file in the Department of Internal Affairs of Pennsylvania, made conformably to an Act of Assembly approved the 16th day of February, 1833, I have hereunto set my Hand and caused the Seal of said Department to be affixed at Harrisburg, this fourth day of October 1898

James W. Latta  
Secretary of Internal Affairs.

